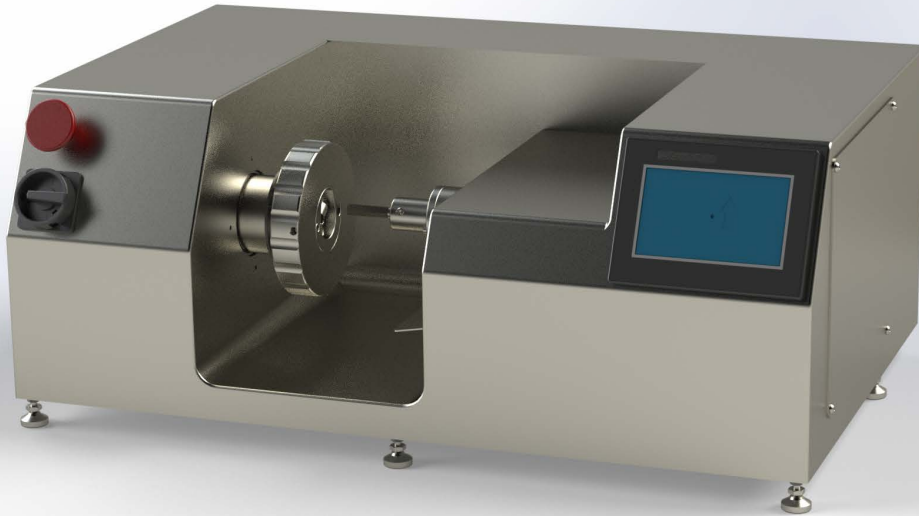




biocut systems
bioprocessing simplified



Benefits



Clean Room
Compatible



Easy Set Up/
Tear Down



Increase Fiber
Yield

SterilCut® Bone Mill

Specifications

- Overall Dimensions:
 - 36" W x 23" D x 15" H
- Overall Weight:
 - 300lbs
- Handled Component Max:
 - 15lbs
- Exterior Construction:
 - 300 Series Stainless Steel
- Power:
 - 110 VAC

Additional Specs

- Precision programming for fully adjustable output
- Grinds from a long bone shank
- Quick set up with single tool